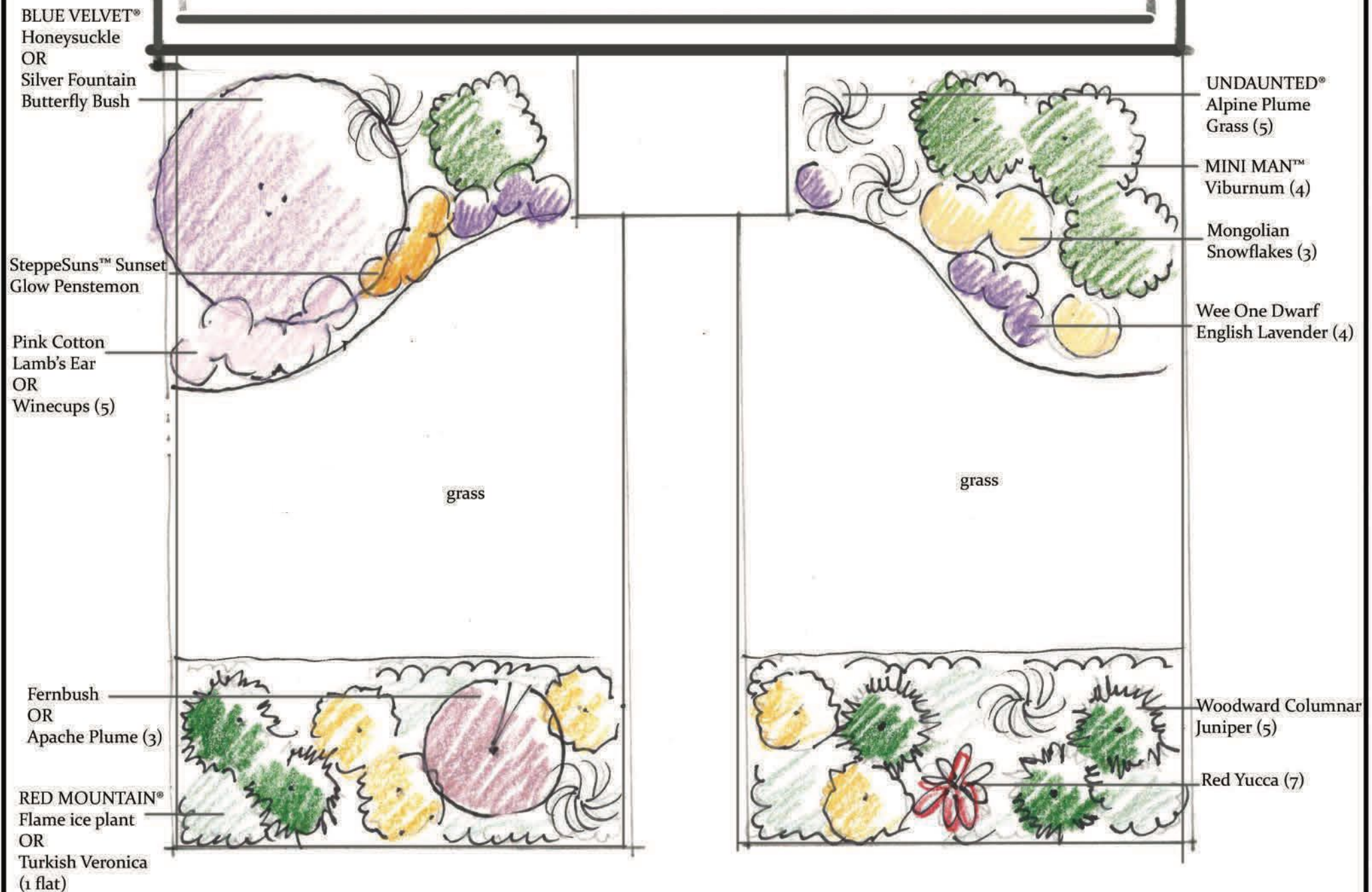
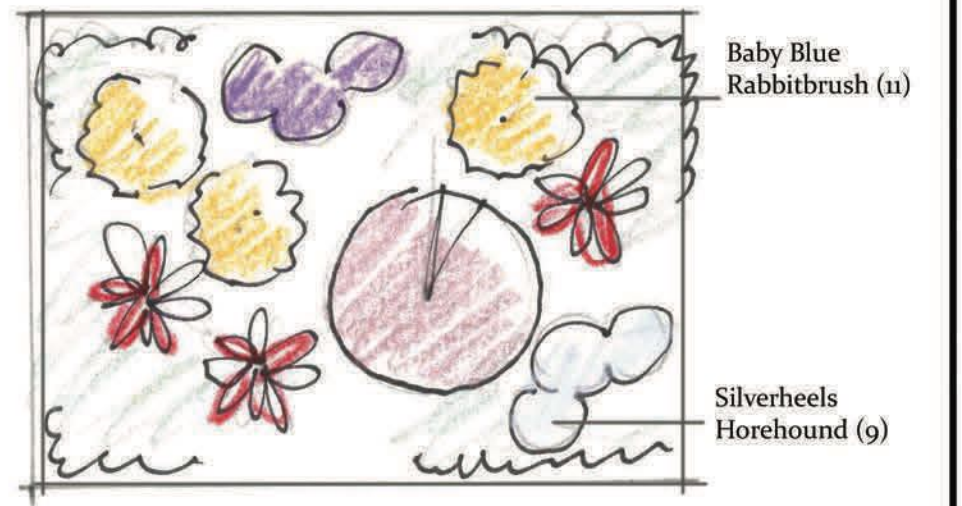
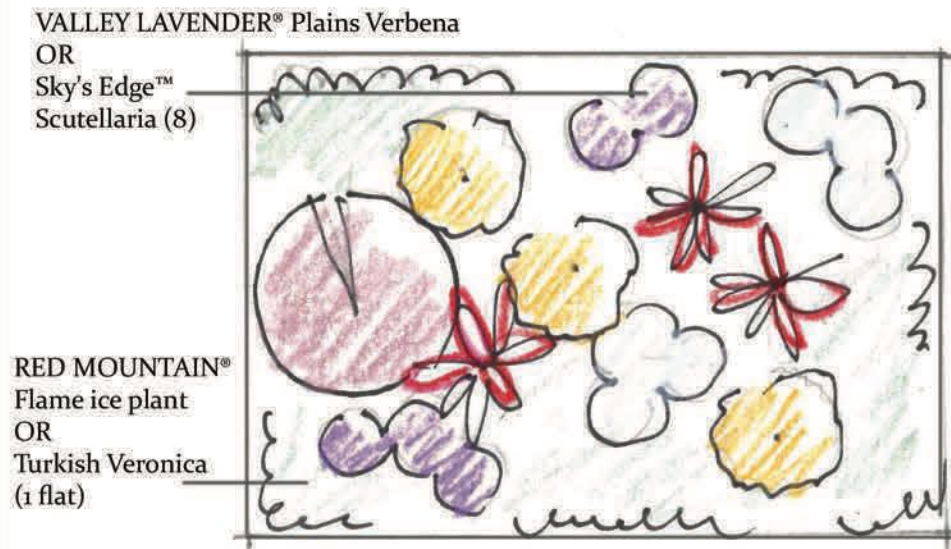


RESIDENCE



Alternative Plantings



FRONT YARD
walkways.

PLANTING DESIGN 20' x 18' total area including

Beautiful drought tolerant yard design for full sun exposure utilizing several North American native plants.

PLANT LIST: Common Name

Alleghany viburnum (1)
Chocolate flower (4)
Mini Man viburnum (3)
Red Birds in a Tree (5)
Blonde Ambition grama grass or Standing Ovation little bluestem (8)
Chieftain manzanita (3)
Autumn Sapphire sage (6)
UNDAUNTED® Alpine plume grass (1)
CHEYENNE® mock orange or Littleleaf mountain mahogany (3)
Colorado desert blue star (11)
RED MOUNTAIN® Flame ice plant or Alan's Apricot ice plant (14)

PLANT LIST: Botanic name

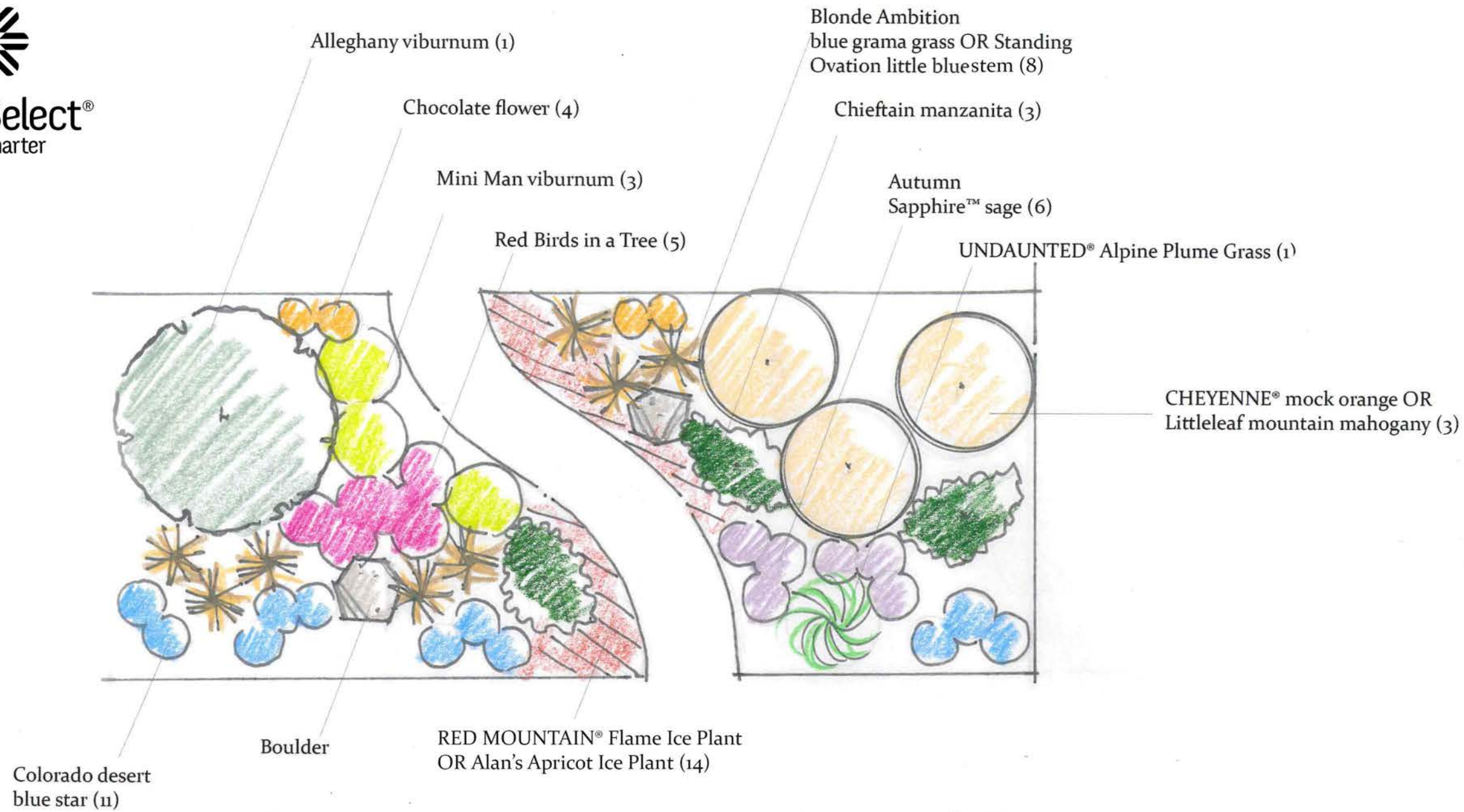
Viburnum x rhytidophylloides 'Alleghany' (1)
Berlandiera lyrata (4)
Viburnum burjaeticum 'P017S' (3)
Scrophularia macrantha (5)
Bouteloua gracilis 'Blonde Ambition' PP 22,048 or *Schizachyrium scoparium*
'Standing Ovation' PP25,202 (8)
Arctostaphylos x coloradoensis 'Chieftain'(3)
Salvia reptans 'P016S' (6)
Achnatherum calamagrostis 'PUND02S' (1)
Philadelphus lewisii 'PWYO1S' or *Cercocarpus intricatus* (3)
Amsonia jonesii (11)
Delosperma 'PWWG02S' or *Delosperma* 'Alan's Apricot' (14)



Plant Select®
plant smarter

DENVER BOTANIC
GARDENS

Designed by: Annie Barrow
Manager, Horticulture Outreach
Programs
annie.barrow@botanicgardens.org



FRONT YARD

This residential landscape design features drought tolerant pollinator plants for a landscape that blooms from spring to frost. A planting display for year-around texture with vertical accents for a south facing space.

PLANT LIST: Common Name

Blue Velvet honeysuckle (1) or Silver Fountain butterfly bush
SteppeSuns® Sunset Glow penstemon (3)
Pink Cotton Lamb's Ear (5) or Winecups
Dog Tuff-comes in flats plant on 1ft centers (two flats with 78 plugs each)
UNDAUNTED® Alpine Plume grass (5)
MINI MAN™ viburnum (4)
Mongolian Snowflakes (3)
Wee One Dwarf English lavender (4)
Fernbush (3) or Apache Plume
RED MOUNTAIN® Flame ice plant (1 flat) or Turkish Veronica
Woodward Columnar Juniper (5)
Red Flowering Yucca (7)
Baby Blue rabbitbrush (11)
Silverheels Horehound (9)
SILVERTON® bluemat penstemon (5) or Grand Mesa beardtongue

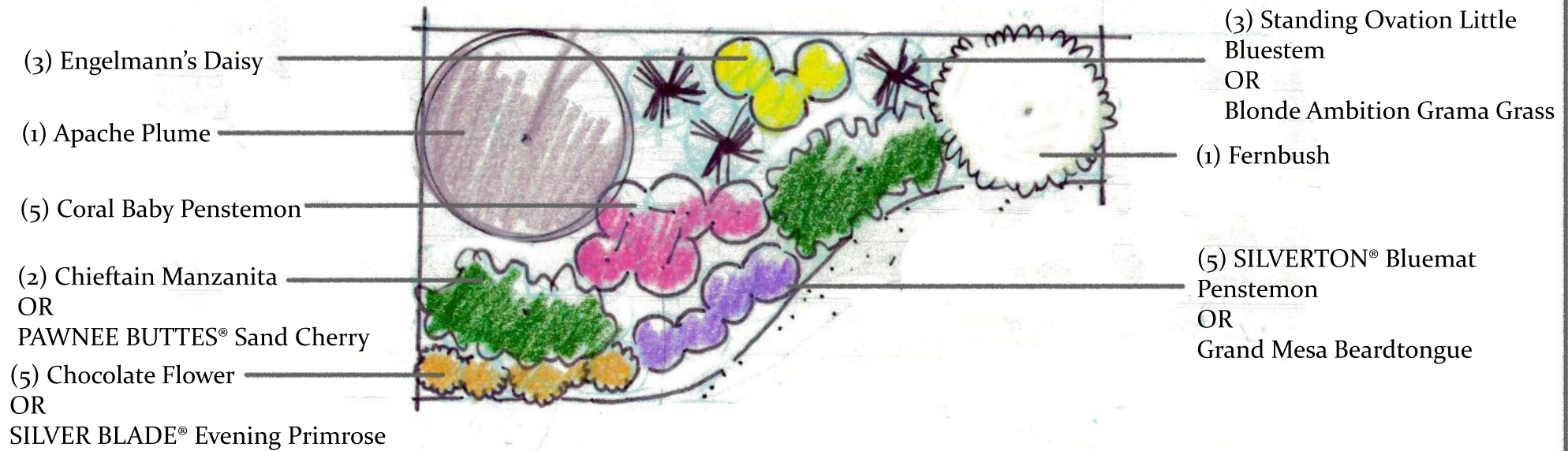
PLANT LIST: Botanic name

Lonicera korolkowii 'Floribunda' (1) or *Buddleja alternifolia* 'Argentea'
Penstemon pinifolius 'P019S' (3)
Stachys x lavandulifolia (5) or *Callirhoe involucrata*
Cynodon 'PWIN04S'-comes in flats plant on 1ft centers (two flats with 78 plugs each)
Achnatherum calamagrostis 'PUND02S' (5)
Viburnum burjaeticum 'P017S' (4)
Clematis hexapetala 'Mongolian Snowflakes' (3)
Lavandula angustifolia 'Wee One' (4)
Chamaebatiaria millefolium (3) or *Fallugia paradoxa*
Delosperma 'PWWG02S' (1 flat) or *Veronica liwanensis*
Juniperus scopulorum 'Woodward' (5)
Hesperaloe parviflora (7)
Ericameria nauseosus var. *nauseosus* (11)
Marrubium rotundifolium (9)
Penstemon linariodes var. *coloradoensis* 'P014S' (5) or *Penstemon mensarum*

Visit www.PlantSelect.org/where-to-buy/ to source Plant Select plants or email <https://plantselect.org> with questions.

Designed by: Annie Barrow

Manager, Horticulture Outreach Programs



NATIVE PLANTING DESIGN 10' x 16'

This native plant design offers an urban landscape plan feel utilizing plants native to Colorado plus one plant (Fernbush) that is native to states west of CO.

PLANT LIST: Common Name

Engelmann's Daisy (3)
Apache Plume (1)
Coral Baby penstemon (5)
Chieftain manzanita (2) or PAWNEE BUTTES® sand cherry
Chocolate flower (5) or SILVER BLADE® evening primrose
Standing Ovation little bluestem (3) or Blond Ambition blue grama grass
Fernbush (1)
SILVERTON® bluemat penstemon (5) or Grand Mesa beardtongue

PLANT LIST: Botanic name

Engelmannia peristenia (3)
Fallugia paradoxa (1)
Penstemon 'Coral Baby' (5)
Arctostaphylos x coloradoensis Chieftain' (2) or Prunus besseyi 'P011S'
Berlandiera lyrata (5) or Oenothera macrocarpa subsp. incana
Schizachyrium scoparium 'Standing Ovation' (3) or Bouteloua gracilis Blonde
Ambition' Chamaebatiaria millefolium(1)
Penstemon linariodes var. coloradoensis (5) or Penstemon mensarum

Visit www.PlantSelect.org/where-to-buy/ to source Plant Select plants or email <https://plantselect.org> with questions.

Designed by: Annie Barrow
Manager, Horticulture Outreach Programs
annie.barrow@botanicgadens.org